



Surname _____

Other Names _____

Centre Number _____

Candidate Number _____

Candidate Signature _____

GCSE

PHYSICAL EDUCATION

**Paper 2 Socio-cultural influences and
well-being in physical activity
and sport**

8582/2

Friday 17 May 2019 Afternoon

Time allowed: 1 hour 15 minutes

**At the top of the page, write your surname
and other names, your centre number,
your candidate number and add your
signature.**

[Turn over]



For this paper you may use:

- **a calculator.**

INSTRUCTIONS

- **Use black ink or black ball-point pen. Pencil should only be used for drawing.**
- **Answer ALL questions.**
- **You must answer questions in the spaces provided. Do not write on blank pages.**
- **Do all rough work in this book. Cross through any work you do not want to be marked.**



INFORMATION

- **The marks for questions are shown in brackets.**
- **The maximum mark for this paper is 78.**
- **Questions should be answered in continuous prose. You will be assessed on your ability to:**
 - **use good English**
 - **organise information clearly**
 - **use specialist vocabulary where appropriate.**

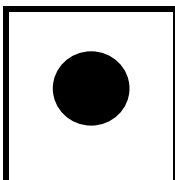
DO NOT TURN OVER UNTIL TOLD TO DO SO



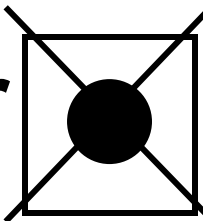
Answer ALL questions.

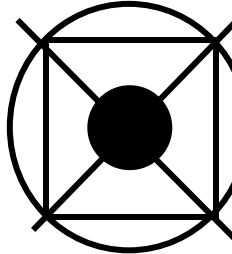
Only ONE answer per question is allowed.

For each answer completely fill in the circle alongside the appropriate answer.

CORRECT METHOD 

WRONG METHODS 

If you want to change your answer you must cross out your original answer as shown. 

If you wish to return to an answer previously crossed out, ring the answer you now wish to select as shown. 



0	1
---	---

Which ONE of these is the 'A' in SMART targets of goal setting? [1 mark]

- A Accepted**
- B Accountable**
- C Aimed**
- D Appropriate**

[Turn over]

<hr/>
1



0	2
---	---

Which ONE of these is largely responsible for growth and repair of muscle tissue?
[1 mark]

A Carbohydrates

B Fat

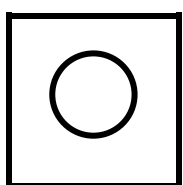
C Protein

D Vitamins

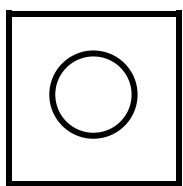
<hr/>
1

0	3
---	---

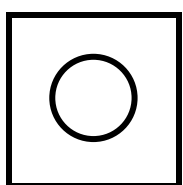
Which ONE of these is an example of mechanical guidance? [1 mark]



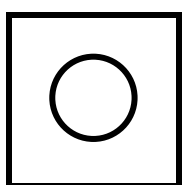
A Holding a performer's wrist in tennis to guide them through a shot.



B Showing a performer where their foot needs to be when bowling in cricket.



C Using a trampoline harness to practise a front somersault.



D Watching video footage of a gymnastics performance on a DVD.

[Turn over]

<hr/>
1



0	4
---	---

Which ONE of these is an example of a self-paced skill? [1 mark]

A Marking an opponent in football.

B Performing a triple jump.

C Receiving a tennis serve.

D Tackling an opponent in rugby.

1



0	5
---	---

Which ONE of these somatotypes is most suited to the high jump? [1 mark]

A Ectomorph

B Endomorph

C Mesomorph

[Turn over]

<hr/>
1



06.1

Define gamesmanship and sportsmanship. [2 marks]

Gamesmanship _____

Sportsmanship _____

0 6 . 2

Describe TWO different examples of sportsmanship. [2 marks]

1 _____

2 _____

[Turn over]

06.3

Identify TWO positive effects of having spectators at a sporting event. [2 marks]

1 _____

2 _____

BLANK PAGE

[Turn over]



0 6 . 4

Explain why the following may lead to hooliganism at football matches.

[4 marks]

Alcohol/drugs _____

Gang culture _____

[Turn over]

10

07.1

Explain the relationship between sport, sponsorship and the media. [3 marks]

07.2

Outline THREE negative impacts of commercialisation in sport on SPECTATORS. [3 marks]

1 _____

2 _____

3 _____

[Turn over]

07.3

Outline THREE positive impacts of commercialisation in sport on PERFORMERS. [3 marks]

1 _____

2 _____

3 _____

9

BLANK PAGE

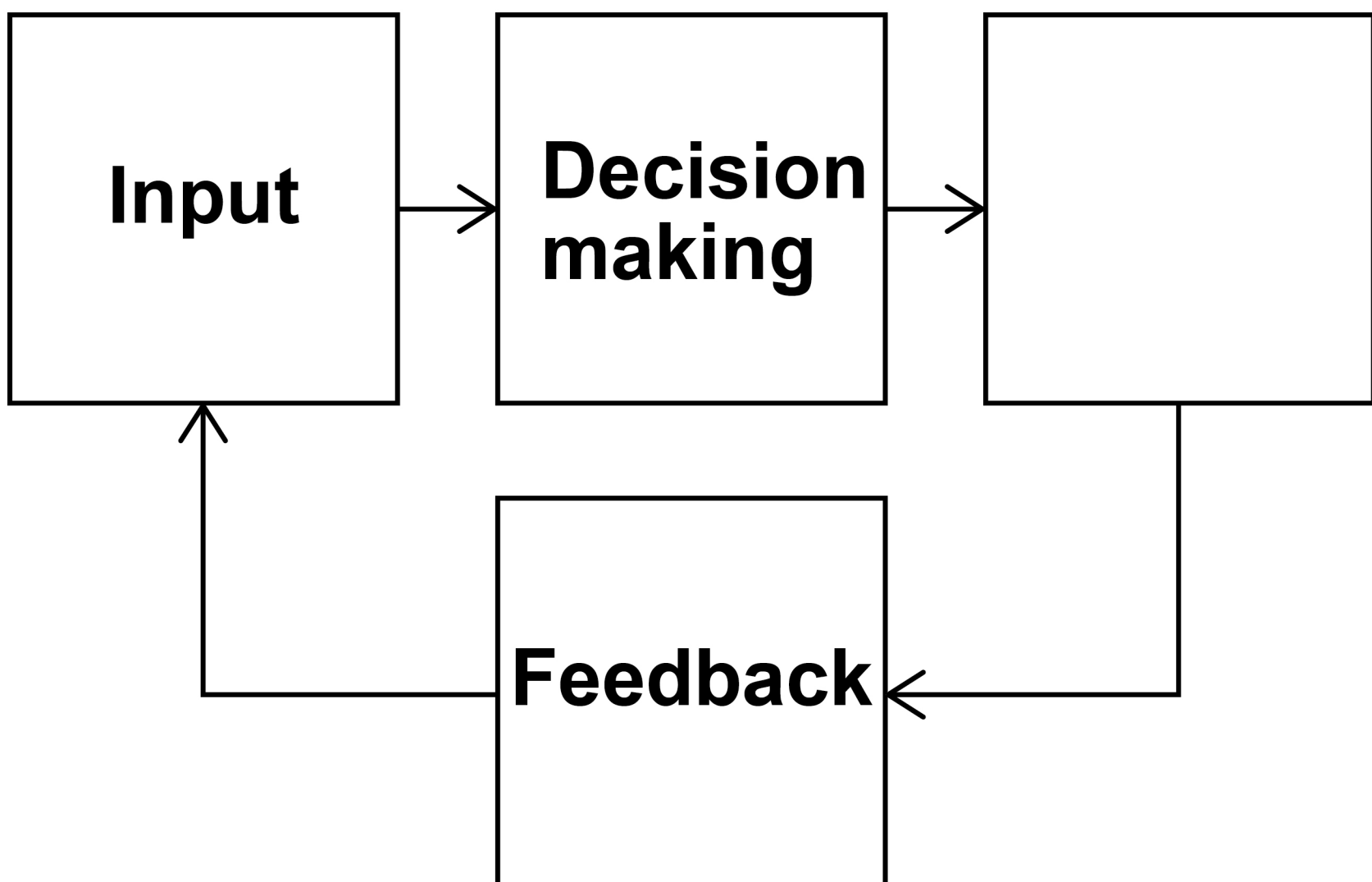
[Turn over]



0	8
---	---

FIGURE 1 shows the basic information processing model.

FIGURE 1



0	8	.	1
---	---	---	---

Identify the missing stage of the basic information processing model in FIGURE 1. [1 mark]

[Turn over]



08.2

Using a named skill from a sport, explain what happens at the following stages of the basic information processing model:

- **input**
- **decision making.**

[4 marks]

Input _____

Decision making

[Turn over]



08.3

A performer can receive feedback extrinsically or intrinsically.

**Justify why extrinsic feedback would be more beneficial for a beginner in a sport.
[4 marks]**

[Turn over]

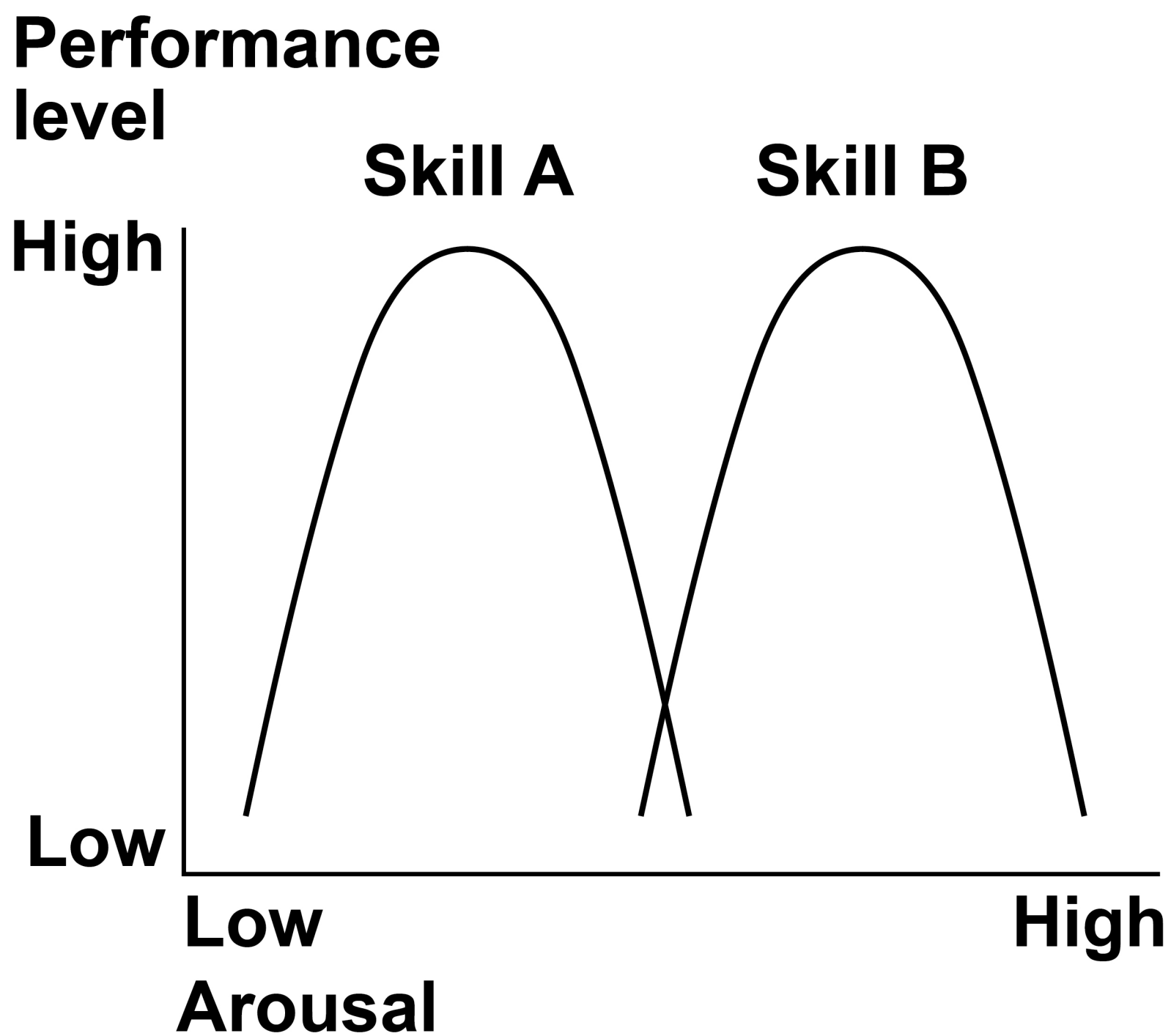
9



09

FIGURE 2 shows inverted-U graphs for two different sporting skills.

FIGURE 2



09.1

State a skill from a sporting activity for both Skill A and Skill B shown in FIGURE 2. [2 marks]

Skill A _____

Skill B _____

[Turn over]

09.2

Mental rehearsal, visualisation and imagery are all stress management techniques.

Identify and describe TWO other stress management techniques. [4 marks]

Technique 1 _____

Technique 2

[Turn over]

6

10

TABLE 1 shows statistics relating to the number of positive drugs tests at the summer Olympic Games from 1992 until 2012.

TABLE 1

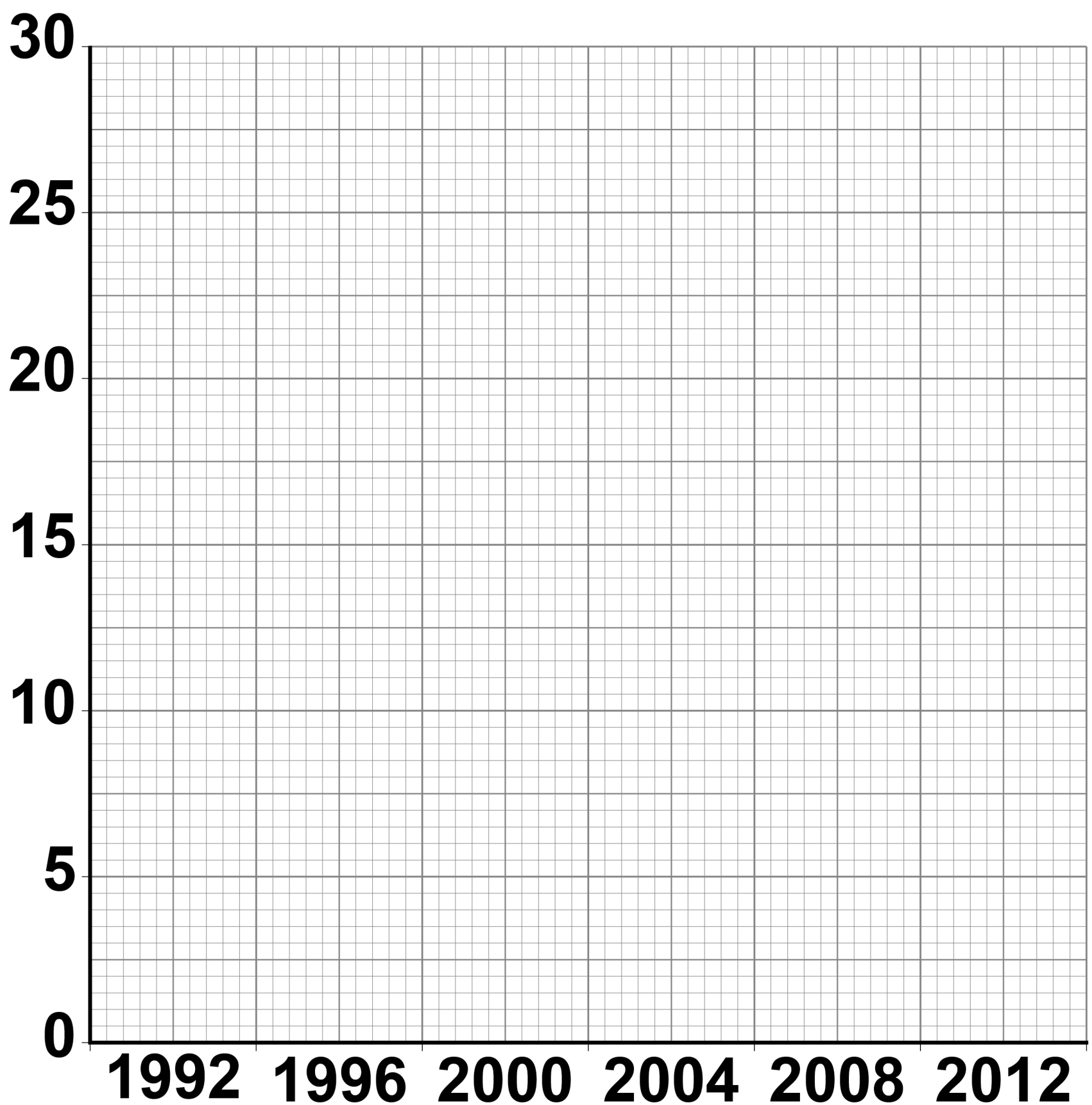
Year	Place	Number of positive tests recorded during the Olympic Games
1992	Barcelona	5
1996	Atlanta	2
2000	Sydney	11
2004	Athens	26
2008	Beijing	25
2012	London	9



1	0	.	1
---	---	---	---

Draw a bar chart on the graph paper below to show the number of positive tests recorded at each Olympic Games.

Label the axes. [2 marks]



[Turn over]



10.2

Many performance enhancing drugs (PEDs) are not allowed in sport. However, some performers still take them because of the positive effect that they have on their bodies.

Complete TABLE 2, on the opposite page, to identify the correct PED or positive effect on the performer's body. [4 marks]



TABLE 2

PED	Positive effect on the performer's body
Anabolic agents	
	Increase in mental and physical alertness
Diuretics	
	Reduce the feeling of pain

[Turn over]



10.3

Joel, a young professional footballer, is struggling to make progress into the first team at his club. A friend has suggested that he takes PEDs.

Discuss the possible advantages AND disadvantages that Joel needs to consider before deciding whether to take PEDs.

[5 marks]

[Turn over]

11

1 1

Skills in sport can be classified in different ways.

1 1 . 1

Define the term 'closed skill'. [1 mark]

1 1 . 2

Give ONE sporting example of an open skill.

Justify your choice. [4 marks]

Sporting example _____

[Turn over]

11.3

Outline the difference between basic and complex skills.

**Use sporting examples in your answer.
[4 marks]**

1 | 1 | . | 4

Outline the difference between performance and outcome goals.

**Use sporting examples in your answer.
[4 marks]**

[Turn over]



1	2
---	---

Evaluate the use of technology in relation to its effect on officials AND sport.
[6 marks]

Lined writing area consisting of 20 horizontal lines.

[Turn over]



6

BLANK PAGE

[Turn over]



1 3

Jane has become increasingly inactive since she left school and started work in an office. She has recently been to see her doctor for a health check and she was classified as being obese.

Identify factors that could have caused Jane to become inactive and obese.

Justify your choices. [9 marks]

[Turn over]



[Turn over]



END OF QUESTIONS

9



BLANK PAGE



BLANK PAGE

For Examiner's Use	
Question	Mark
1	
2	
3	
4	
5	
6	
7	
8	
9	
10	
11	
12	
13	
TOTAL	

Copyright information

For confidentiality purposes, from the November 2015 examination series, acknowledgements of third party copyright material will be published in a separate booklet rather than including them on the examination paper or support materials. This booklet is published after each examination series and is available for free download from www.aqa.org.uk after the live examination series.

Permission to reproduce all copyright material has been applied for. In some cases, efforts to contact copyright-holders may have been unsuccessful and AQA will be happy to rectify any omissions of acknowledgements. If you have any queries please contact the Copyright Team, AQA, Stag Hill House, Guildford, GU2 7XJ

Copyright © 2019 AQA and its licensors. All rights reserved.

IB/M/AMAS/Jun19/8582/2/E2